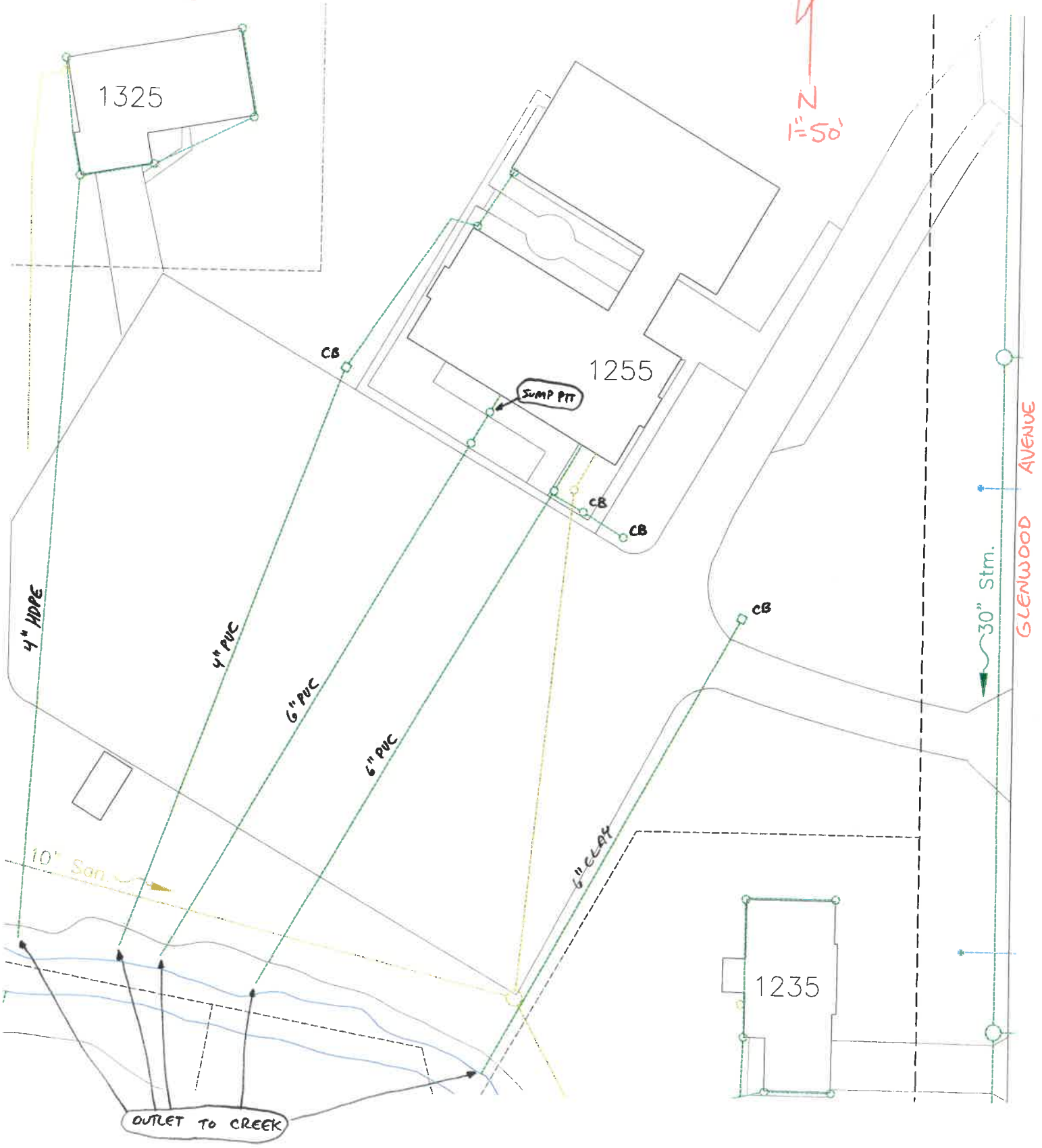


2015  
INVESTIGATION OF ILLEGAL SEWER  
CONNECTIONS, DYE TESTING CONFIRMED  
NO CROSS CONNECTIONS EXIST. ALL  
CONNECTIONS ARE IN COMPLIANCE  
AT THIS TIME

1255 & 1325 GLENWOOD  
AVENUE



2015

1325 GLENWOOD AVENUE

